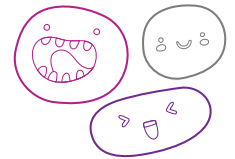







OUT OF SCHOOL HOURS CARE

Vacation Care | 8 - 19 July






IN-HOUSE EXCURSION/ INCURSION	FULL FEE	\$66.00	CCS REDUCED FEE*	\$9.40-37.45
	FULL FEE	\$86.00	CCS REDUCED FEE*	\$12.65-45.45



WEEK 1

Monday 8 July	Tuesday 9 July	Wednesday 10 July	Thursday 11 July	Friday 12 July
<p>In-House</p> <p>Geology and Jewellery</p>  <p>We will be doing rock paintings and hiding them around the school, making our own crystals and dream catchers. Make some jewellery to take home and share with our loved ones.</p> <p>Outcomes: 2, 3, 4, 5</p>	<p>In-House</p> <p>Scooby Doo Scavenger Hunt</p>  <p>Scooby Dooby Doo! Come and join the Mystery INC and help solve mysteries and catch villains in a giant scavenger hunt! Get groovy with Scooby and wear your best 70's outfit!</p> <p>Outcomes: 1, 4, 5</p>	<p>Incursion</p> <p>Animals Anonymous</p>  <p>A variety of Australian animals are coming to visit us right here at OSHC! We will get to see, feel and learn about some furry friends! Start: 1:00pm Finish: 2:00pm</p> <p>Outcomes: 2, 3, 5</p>	<p>In-House</p> <p>Wellness Day</p>  <p>Wear your comfiest pyjamas for a day of finding our Zen. Try some Yoga and relax with face masks, making our own bucket lists, bingo and much more!</p> <p>Outcomes: 1, 2, 4</p>	<p>Excursion</p> <p>Hahndorf Farm Barn</p>  <p>We are off to visit the animals at Hahndorf Farm Barn. Please bring a jacket. Depart: 8:45am Return: 3:00pm Transport: Private Bus</p> <p>Outcomes: 1, 3, 4, 5</p>

WEEK 2

Monday 15 July	Tuesday 16 July	Wednesday 17 July	Thursday 18 July	Friday 19 July
<p>Incursion</p> <p>Games 2 U</p>  <p>Games 2 U is bringing us loads of fun! Mobile games theatre, giant hamster balls and much more! Start: 1:00pm Finish: 2:30pm</p> <p>Outcomes: 1, 4, 5</p>	<p>In-House</p> <p>Camping Day</p>  <p>We will be building our own tents, doing some bird watching, telling campfire stories, creating our own fishing rods and even making s'mores!</p> <p>Outcomes: 1, 2, 3</p>	<p>Excursion</p> <p>Bounce</p>  <p>We are going to Bounce today for some fun with our YMCA friends from Investigator OSHC. Depart: 9:30am Return: 1:30pm Transport: Private Bus</p> <p>Outcomes: 1, 3, 5</p>	<p>Excursion</p> <p>SANFLW Football Game</p>  <p>Today we are off to go and watch one of our superstar educators play in an SANFLW football game at Thebarton! Depart: 10:00am Return: 2:30pm Transport: Private Bus</p> <p>Outcomes: 1, 3, 5</p>	<p>In-House</p> <p>Christmas in July</p>  <p>Put on your best Christmas outfit and get ready to celebrate Christmas in July! We will be making craft, decorating the tree, watching Christmas movies and dancing to carols!</p> <p>Outcomes: 1, 2, 4, 5</p>

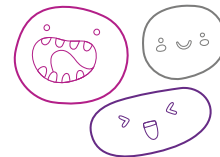
Craigmore South OSHC
2 Turner Drive, Craigmore, SA 5114
Tiffany Martin
0459 988 357

OSHC Support Team
P 08 8200 2516
E oshc@ymcasa.org.au
f /YMCA SA OSHC



OUT OF SCHOOL HOURS CARE

Craigmore South OSHC



Important information

What is included

Breakfast and afternoon tea will be provided. Programmed activities including excursions, incursions and in-house activities.

What to bring

Please bring recess, lunch, brain food, and a water bottle everyday unless otherwise stated on the program.

Fees and cancellations

All bookings must be received by Monday 24 June to avoid a \$3 casual fee. Cancellations must be made two weeks prior to the date of the requested care to avoid payment. By making a booking you are agreeing to pay the fees through your direct debit account in addition to normal OSHC bookings. Please review our terms and conditions online for our fee and policy information.

Excursions

Please make sure you arrive at the service at least 30 minutes before the bus departure. Please make sure you sign the Excursion Authorisation when you sign your children into OSHC for that day. While bus drivers in SA are exempt from ensuring passengers under 16 years are restrained. YMCA will make every effort to ensure the safety of all children by using seatbelts that are supplied and be guided by our policies and transport risk assessments.

Learning outcomes:



OUTCOME 1

Children and young people have a strong sense of identity



OUTCOME 2

Children and young people are connected & contribute to their world



OUTCOME 3

Children and young people have a strong sense of wellbeing



OUTCOME 4

Children and young people are confident and involved learners



OUTCOME 5

Children and young people are effective communicators

Sun Smart Policy

Sun Smart guidelines are followed so please ensure children are in appropriate clothing and no singlets or thongs. Sunscreen is provided but if your child is sensitive to sunscreen, please bring your own.

Things to remember

Please note that we are a nut-aware service and ask that you do not bring food that contain nut products. Handheld electronics and smart watches are not permitted at the centre. We welcome feedback and suggestions at any time, please see your centre staff. Programmed activities are subject to change.

Operational hours

OSHC will be open from 6:30am - 6:00pm, please sign in and out between these times.

Daily fees

In-house: \$66
CCS Reduced fee: \$9.40 - \$37.45

Excursion and Incursion: \$86
CCS Reduced fee: \$12.65 - \$45.45



Book your session via the Xplor Home App

Visit sa.ymca.org.au/OSHC for more information